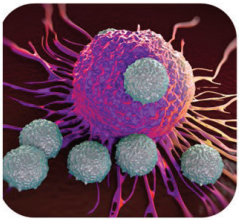
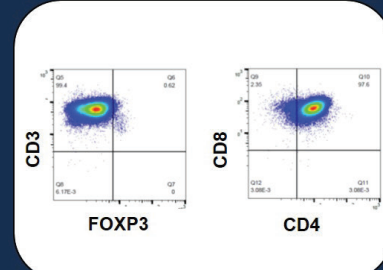
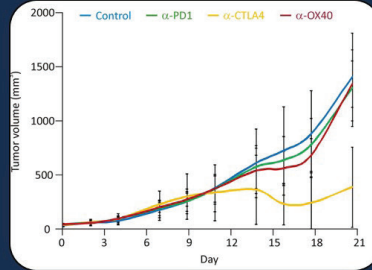


Champions Oncology SynScreen offers lower-cost, large-scale syngeneic studies across 6 lines.

Champions Oncology SynScreen

Syngeneic Lines:

- MC38
- CT26
- 4T1
- LLC
- B16/F10
- RENCA

Enrollment Period
May 28-July 31

Rollout Study Start
August 15

Study Readout
Optional Endpoint Analysis

Enrollment in this study is now open!

Lower Cost

\$350/mouse on study
FREE control group data
50% off PD-1, CTLA-4 or OX40 group data

Large Scale

20 arms available per model (10 animals/arm)*

Nanostring Flow Cytometry and IHC analysis available

(baseline flow cytometry data available on all models for response to PD-1, CTLA-4 and OX40)

*available on a first come, first serve basis

Available Models

MC38
CT26
4T1
LLC
B16/F10
RENCA

Enrollment ends July 31
Contact Champions Oncology to Learn More